

GILLETTE CHILDREN'S HOSPITAL EXPANSION

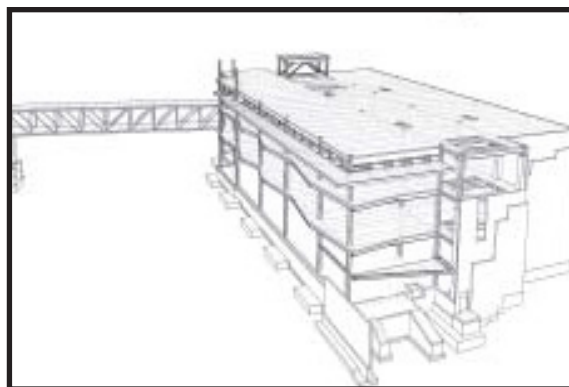
LEJEUNE
STEEL COMPANY
a subsidiary of API Group, Inc.



Dec. 28, 2009 — **LEJEUNE** will fabricate 400 tons of structural steel for the Pediatric Intensive Care Unit (PICU) at the Gillette Children's Hospital in St. Paul, Minn. The new state-of-the-art facility will be located across from the existing hospital on University Avenue. Rehabilitation Therapies and the Center for Gait and Motion Analysis will also move into the new building.

According to its website, Gillette partners with Regions Hospital to provide pediatric trauma care for critically injured children. The new PICU will provide intensive care for critically injured children and children recovering from surgery. Patients will have private rooms with space for a parent or caregiver to stay overnight.

LeJeune will complete the main structure in its Minneapolis fabrication shop to deliver in February. LeJeune will also fabricate an enclosed skyway connecting the new PICU facility to the main hospital. The skyway will ship in June 2010, with a single splice in each truss.



*USGBC and related logo is a trademark owned by the U.S. Green Building Council and is used by permission.